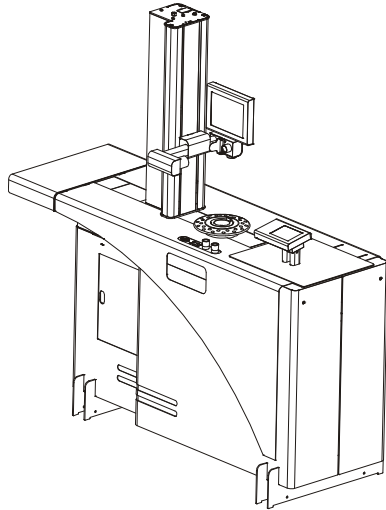


## ANKH

### Tool measurement, inspection and presetting machine



#### PRODUCT CODE

<b>ISO/BT/SK/CAT Spindle-holder</b>	04ANI50/..45/..40/..30
<b>HSK Spindle-holder</b>	04ANH100/..80/..63/..50/..40
<b>VDI Spindle-holder</b> (index in 4 positions 0°,90°,180°,270°)	04ANV50/..40/..30/..20

Measuring range: diameter max. 600 mm (radius 300 mm); **height max. 600 mm**

<b>ISO/BT/SK/CAT Spindle-holder</b>	04AN8150/..45/..40/..30
<b>HSK Spindle-holder</b>	04AN8H100/..80/..63/..50/..40
<b>VDI Spindle-holder</b> (index in 4 positions 0°,90°,180°,270°)	04AN8V50/..40/..30/..20

Measuring range: diameter max. 600 mm (radius 300 mm); **height max. 800 mm**

#### Mechanics/electronics/optics standard equipment

- Machine structure in stainless steel offering high mechanical and long life, floor mounted with adjustable supports in non-deformable steel.
- Base and column made of natural granite: linearity max error 2 µm/Mt – certification with Taylor Hobson res.1 µm/Mt. electronic millesimal level.
- ISO / BT / HSK / VDI..... etc. Interchangeable rotating spindle-holder (to be specified) max run-out error < 2 µm.
- Double vault arc prismatic slideways : n°2 X axis slideways, n°1 Z axis slideway.
- Double re-circulating ball bearing slides, lubrivated for life ( - X axis = 3 - Z axis = 2) (preloading slides/slideways: P/H class).
- Spindle index in four angular positions: 0° - 90° - 180° - 270° (option).
- Universal mechanical tool clamping.
- Pneumatic-mechanic braking of the spindle-holder rotation with error radial compensation of the clamping force: no axis angular run error.
- Constant load Archimedean spiral spring (as opposed to a mass counter-balance system).
- Vision-system for tool measuring and cutting inspection consisting of :
  - TFT screen – colours 212 x 160 mm, magnifications about 35X .
  - C-MOS sensor – Framed image area 6,4 x 4,8 mm VGA System.
- Machine operator interface through:
  - TFT 5,7” colour Touch Screen.
  - Technology with FLASH® 32 bit microprocessor.
  - LINUX operating system.
  - Data storage on SD card.
- Standard software:
  - CNC machine origin management and adapters.
  - Tool list creation and/or single tool.
  - Automatic change of CNC machine origin allocation
  - TOOLINGUP to manage:
    - tools set and Post Processor universal generator.
    - magnetic chip code-holder (Balluff for example, hardware not included).
    - multi-cutting tools.



*The present Price-list cancels and replaces any other previous one in your hands. Pag. 1/2*

## ANKH

### *Tool measurement, inspection and presetting machine*

- Optical Equipment:
  - Telecentric lens.
  - Doublet lenses at low F/Number in order to eliminate the error of the clearness circle.
  - Episcopic illuminator with ring lens and red leds ; diascopic illuminator with red, puntiform light led.
- ELBO CONTROLLI Linear Transducers in optical glass type SLIDE 371 certified HP laser
  - Axes resolution: X= 1 µm, Z= 1 µm.
- Anti-dust cover provided for when not in use.
- Overall dimensions: Length = 1850 mm, Height = 1960 mm, Depth = 687 mm.

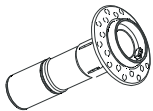
### OPTIONS

**PRODUCT CODE**

***ISO/BT/SK/CAT Spindle-holder***

04PAS50/..45/..40/..30

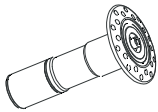
50,45,40,30 versions are available. The spindle allows the tool-holder rotation.



***HSK Spindle-holder***

04PAH100/..80/..63/..50/..40

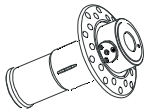
Equipped with an integrated mechanical clamping system.  
 100, 80, 63, 50, 40 FORM A,C,E versions are available.



***VDI Spindle-holder***

04PAV50/..40/..30/..20

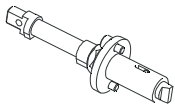
50,40,30,20 versions are available.



***CAPTO integral spindle-holder***

04PC3/..4/..5/..6

C3, C4, C5, C6 versions are available.



***Interchangeable spindle index***

04OIA

- *Other spindle-holder by request* -

